



GAT MONTHLY MEMBERSHIP PROGRESS REPORT

Results as of: 1/31/2022

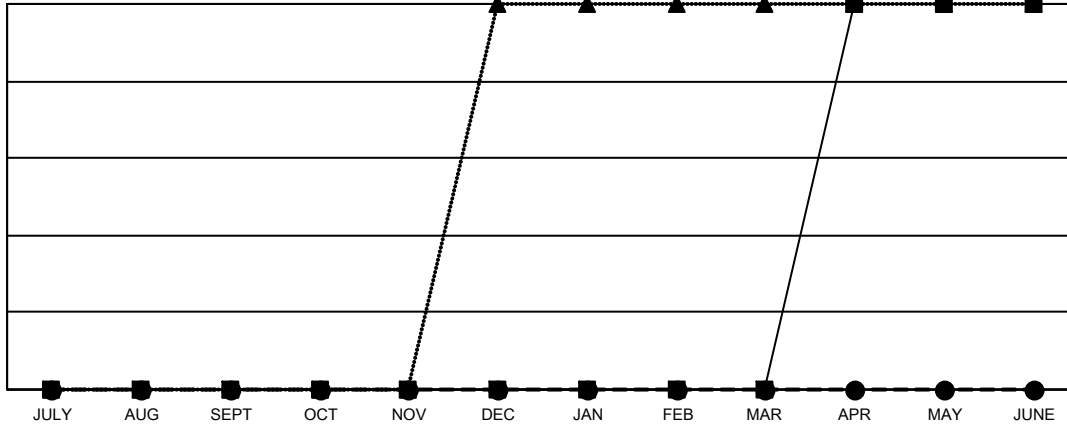
Multiple District 39

LOCATION: IDAHO

Clubs			
RESULTS FOR 2021-2022			
QUARTER	NEW CLUB GOAL	NEW CLUBS	DROPPED CLUBS
JULY/AUG/SEPT	0	0	1
OCT/NOV/DEC	0	0	0
JAN/FEB/MAR	0	0	0
APR/MAY/JUNE	1	0	0

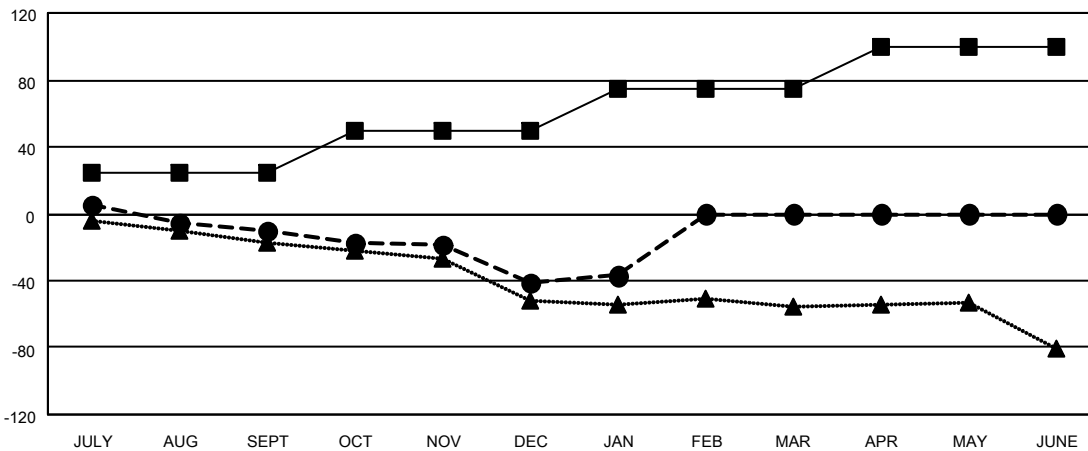
Members			
RESULTS FOR 2021-2022			
QUARTER	MEMBER GROWTH NET GOAL	MEMBER GROWTH ACTUAL	DROPPED MEMBERS ACTUAL (including transfers)
JULY/AUG/SEPT	25	36	45
OCT/NOV/DEC	25	28	58
JAN/FEB/MAR	25	16	12
APR/MAY/JUNE	25	0	0

GOALS AND ACTUAL NEW CLUBS CUMULATIVE



- CURRENT YEAR GOALS FOR NEW CLUBS
- CURRENT YEAR ACTUAL NEW CLUBS
- ▲- LAST YEAR ACTUAL NEW CLUBS

GOALS AND ACTUAL MEMBERS CUMULATIVE



- MEMBER GROWTH NET GOAL
- MEMBER GROWTH ACTUAL
- ▲- LAST YEAR MEMBERSHIP ACTUAL

DROPPED CLUBS: 1	25 CLUBS OF 55 ADDED 1 OR MORE NEW MEMBERS	GENDER DISTRIBUTION
DROPPED MEMBERS	CLICK HERE FOR CUMULATIVE MEMBERSHIP DATA	MALE 719 (60.52%)
DECEASED 17		FEMALE 469 (39.48%)
CLUB CANCELLED 0		NON BINARY 0 (0.00%)
OTHER 98		PREFER NOT TO ANSWER 0 (0.00%)
TOTAL 115		TOTAL FAMILY UNIT MEMBERS 320
		FAMILY MEMBERS PAYING HALF DUES 164